

## Contact Details

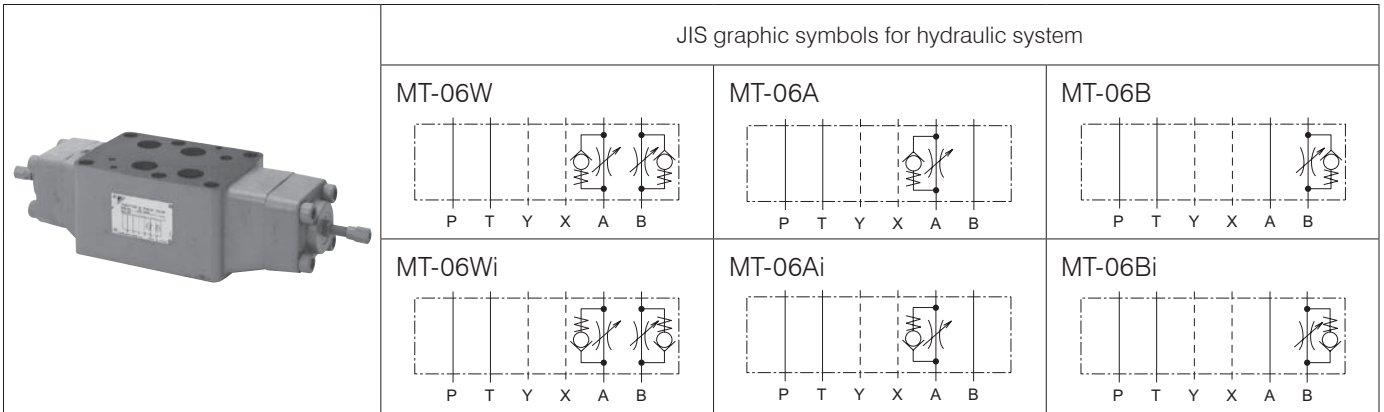
Before using the product, please check the guide pages at the front of this catalog.

Internet

<http://www.daikinpmc.com/en/>

For latest information, PDF catalogs and operation manuals

# 06 Series Stacking Type Port A/B Throttle Valves



## Nomenclature

※ - MT - 06 ※ ※ - 30  
 1 2 3 4 5 6

### 1 Applicable fluid code

No designation: Petroleum-based hydraulic fluid, water-glycol hydraulic fluid  
 F: Phosphate ester hydraulic fluid

### 2 Model No.

MT: Modular stacking type throttle valve

### 3 Nominal diameter

06:  $\frac{3}{4}$

### 4 Control port

W: Port A/B  
 A: Port A  
 B: Port B

### 5 Control method

No designation: Meter-out control  
 i: Meter-in control

### 6 Design No.

(The design No. is subject to change)

## Specifications

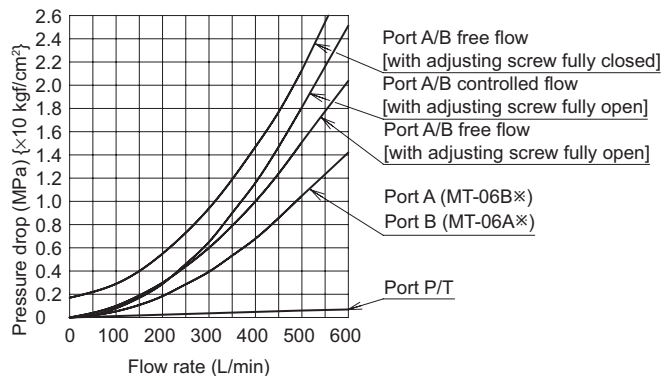
Model code	Maximum operating pressure MPa {kgf/cm <sup>2</sup> }	Maximum flow rate L/min	Check valve cracking pressure MPa {kgf/cm <sup>2</sup> }	Mass kg
MT-06※※-30	35 {350}	600	0.15 {1.5}	13.6

## Handling

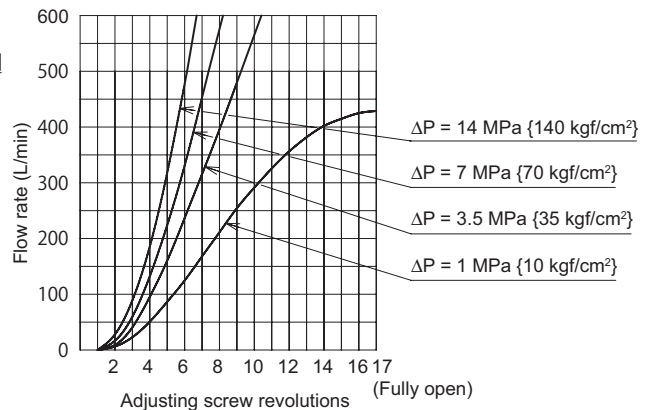
- The flow rate will not be zero even if the flow rate adjusting screw is fully tightened.

## Performance curves (viscosity: 32 mm<sup>2</sup>/s {cSt})

Pressure drop characteristics



Adjusting screw revolution - Flow rate characteristics



# Contact Details

Before using the product, please check the guide pages at the front of this catalog.

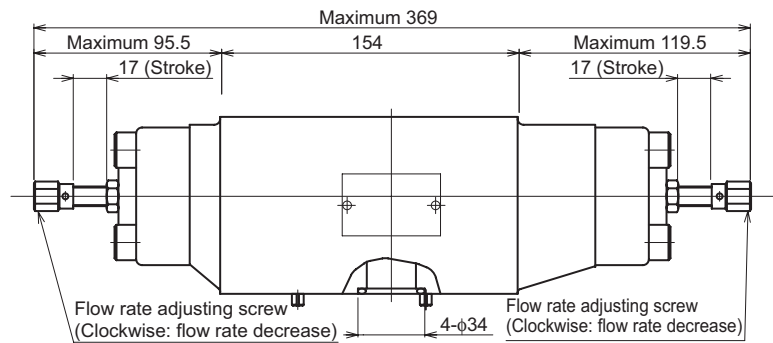
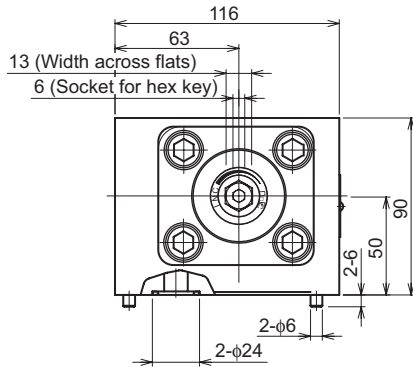
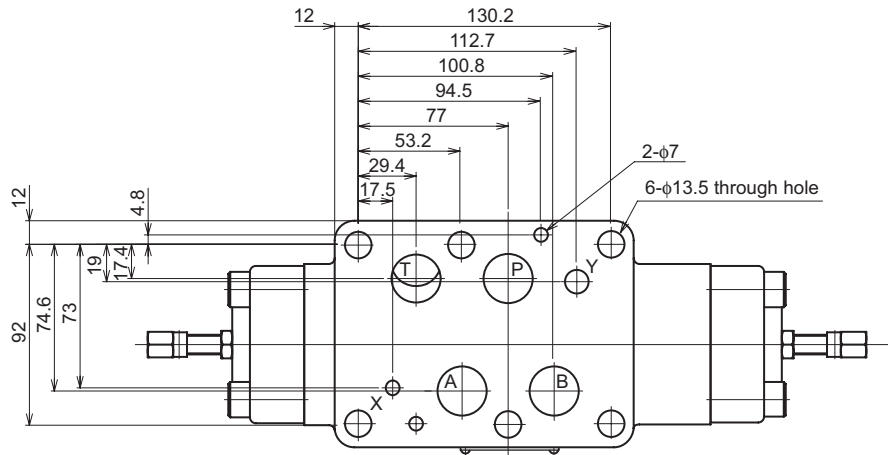
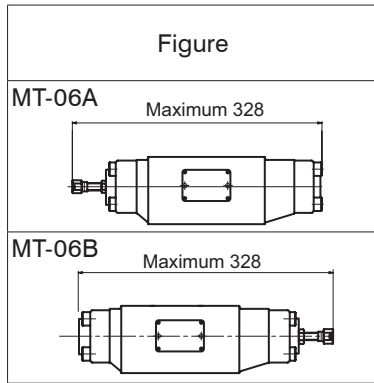
Internet

<http://www.daikinpmc.com/en/>

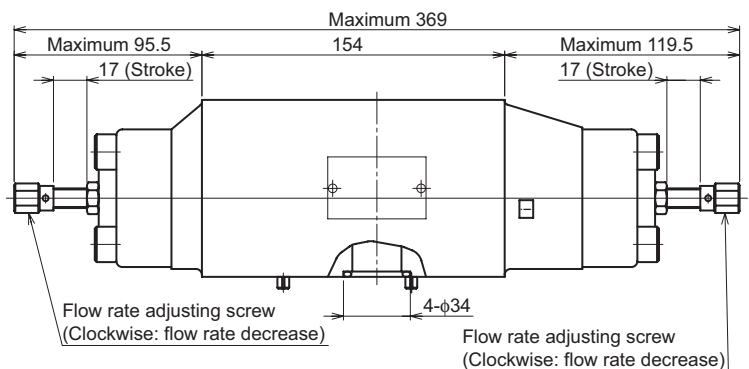
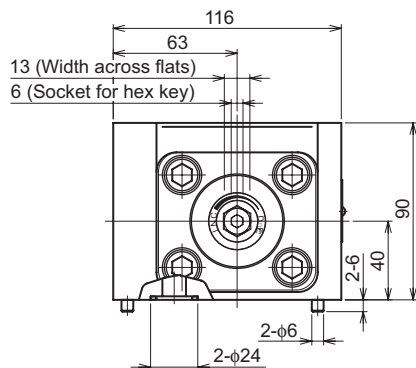
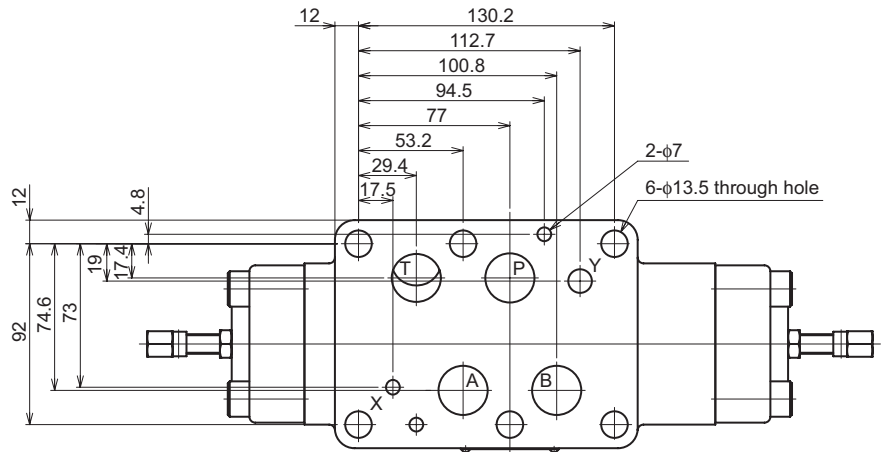
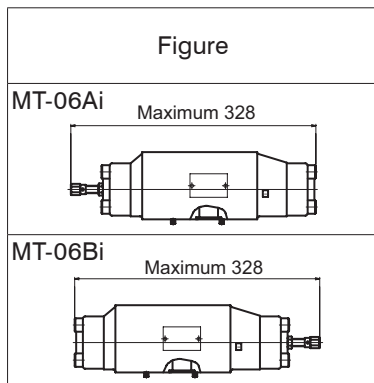
For latest information, PDF catalogs and operation manuals

## External dimension diagram

MT-06W



MT-06Wi



## Contact Details

Before using the product, please check the guide pages at the front of this catalog.

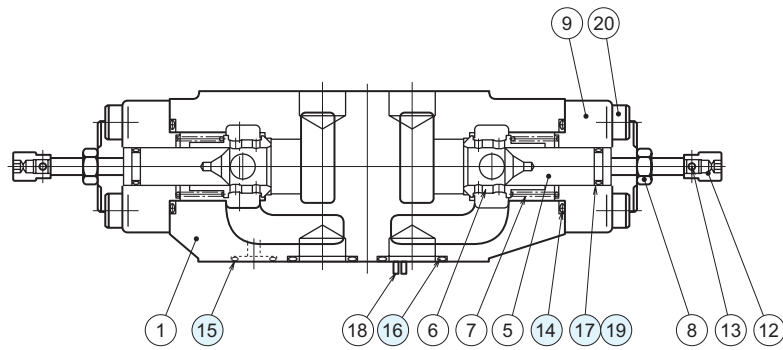
Internet

<http://www.daikinpmc.com/en/>

For latest information, PDF catalogs and operation manuals

## Sectional structural diagram

MT-06W



Sealing part table

Part No.	Name	Quantity	Part specifications
14	O-ring	4	JIS B 2401 1BP44
15	O-ring	2	JIS B 2401 1BP20
16	O-ring	4	JIS B 2401 1BP28
17	O-ring	2	JIS B 2401 1BP16
19	Backup ring	2	JIS B 2407 Bias cut P16