

## Contact Details

Before using the product, please check the guide pages at the front of this catalog.

Internet

<http://www.daikinpmc.com/en/>

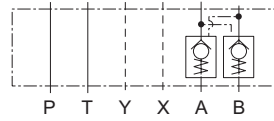
For latest information, PDF catalogs and operation manuals

# 06 Series Stacking Type Pilot Operated Check Valves

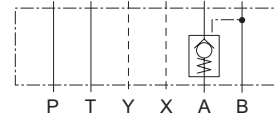
JIS graphic symbols for hydraulic system



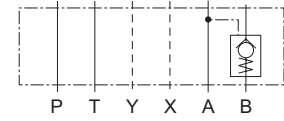
MPD-06W



MPD-06A



MPD-06B



## Nomenclature

※ - MP D - 06 ※ - ※※ - 30

1      2      3      4      5      6      7

### 1 Applicable fluid code

No designation: Petroleum-based hydraulic fluid, water-glycol hydraulic fluid  
F: Phosphate ester hydraulic fluid

### 2 Model No.

MP: Modular stacking type pilot operated check valve

### 3 Decompression code

D: Decompression type

### 4 Nominal diameter

06: 3/4

### 5 Control port

W: Port A/B  
A: Port A  
B: Port B

### 6 Cracking pressure code

20: 0.2 MPa {2 kgf/cm<sup>2</sup>}  
50: 0.5 MPa {5 kgf/cm<sup>2</sup>}

### 7 Design No. (The design No. is subject to change)

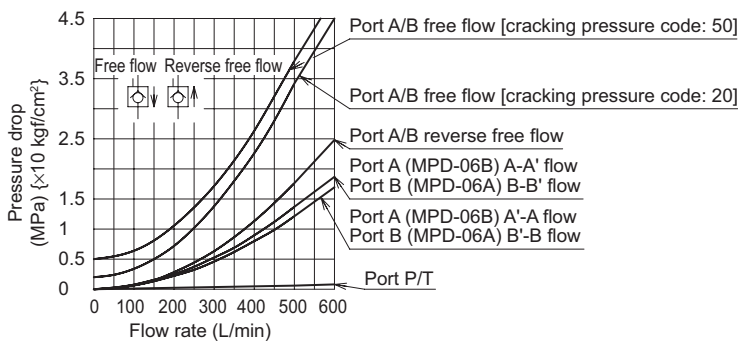
## Specifications

Model code	Maximum operating pressure MPa {kgf/cm <sup>2</sup> }	Maximum flow rate L/min	Cracking pressure MPa {kgf/cm <sup>2</sup> }	Area ratio *1	Mass kg
MPD-06※-20-30	35 {350}	600	0.2 {2}	(1) 2.0:1 (2) 12.5:1	13.6
MPD-06※-50-30			0.5 {5}		

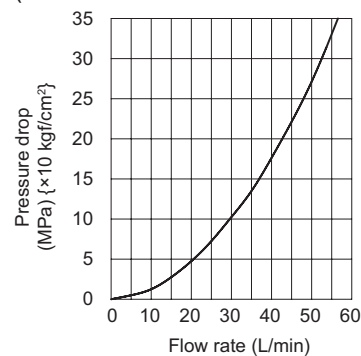
Note: \*1 Area ratio (1) Pilot piston: Large check valve  
(2) Pilot piston: Small check valve

## Performance curves (viscosity: 32 mm<sup>2</sup>/s {cSt})

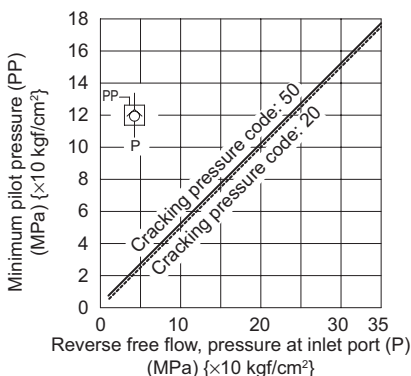
### Pressure drop characteristics



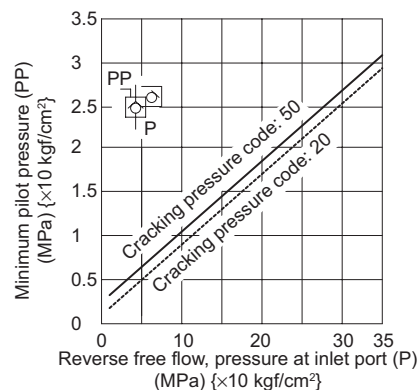
### Pressure drop characteristics (with the small check valve fully open)



### Pilot pressure characteristics (Large check valve: piston)



### Pilot pressure characteristics (Small check valve: piston)



## Contact Details

Before using the product, please check the guide pages at the front of this catalog.

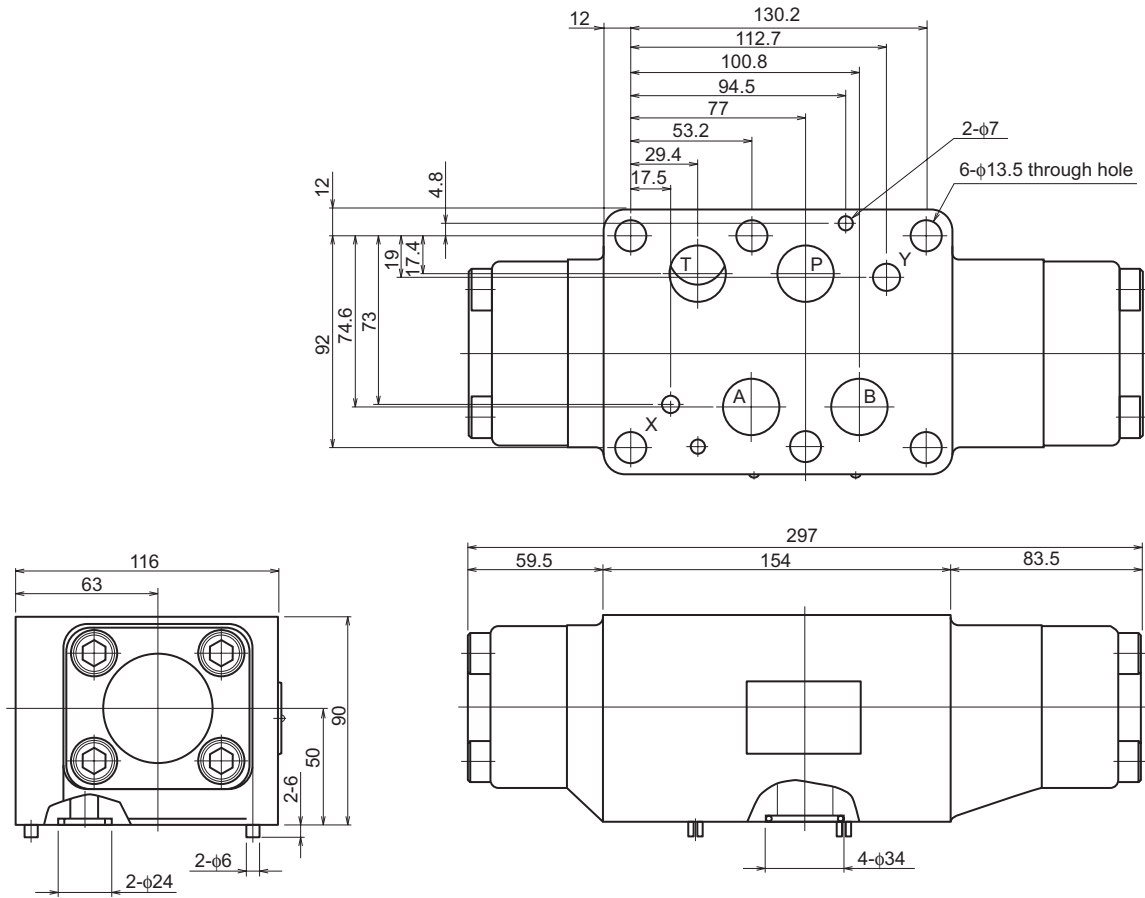
Internet

<http://www.daikinpmc.com/en/>

For latest information, PDF catalogs and operation manuals

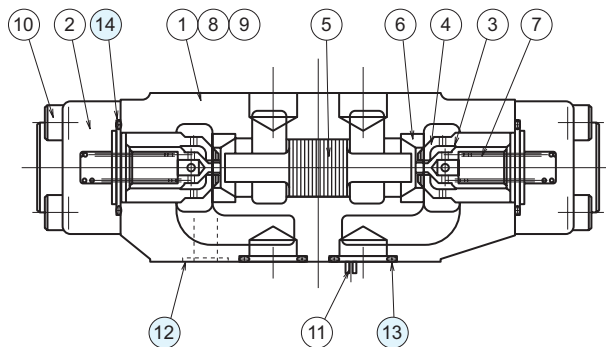
## External dimension diagram

MPD-06W



## Sectional structural diagram

MPD-06W



### Sealing part table

Part No.	Name	Quantity	Part specifications
12	O-ring	2	JIS B 2401 1BP20
13	O-ring	4	JIS B 2401 1BP28
14	O-ring	2	JIS B 2401 1BP44